

Marmot[®]
FOR LIFE

SPRING

20
13

CATALOGUE



CONTENT

SHELL 04

Gore-Tex® 05

FusionDri 07

MEMBRAIN® 08

PreCip® 10

Urban Tech 11

SOFTSHELL 12

FLEECE 14

MOMENTUM 16

SPORTSWEAR 18

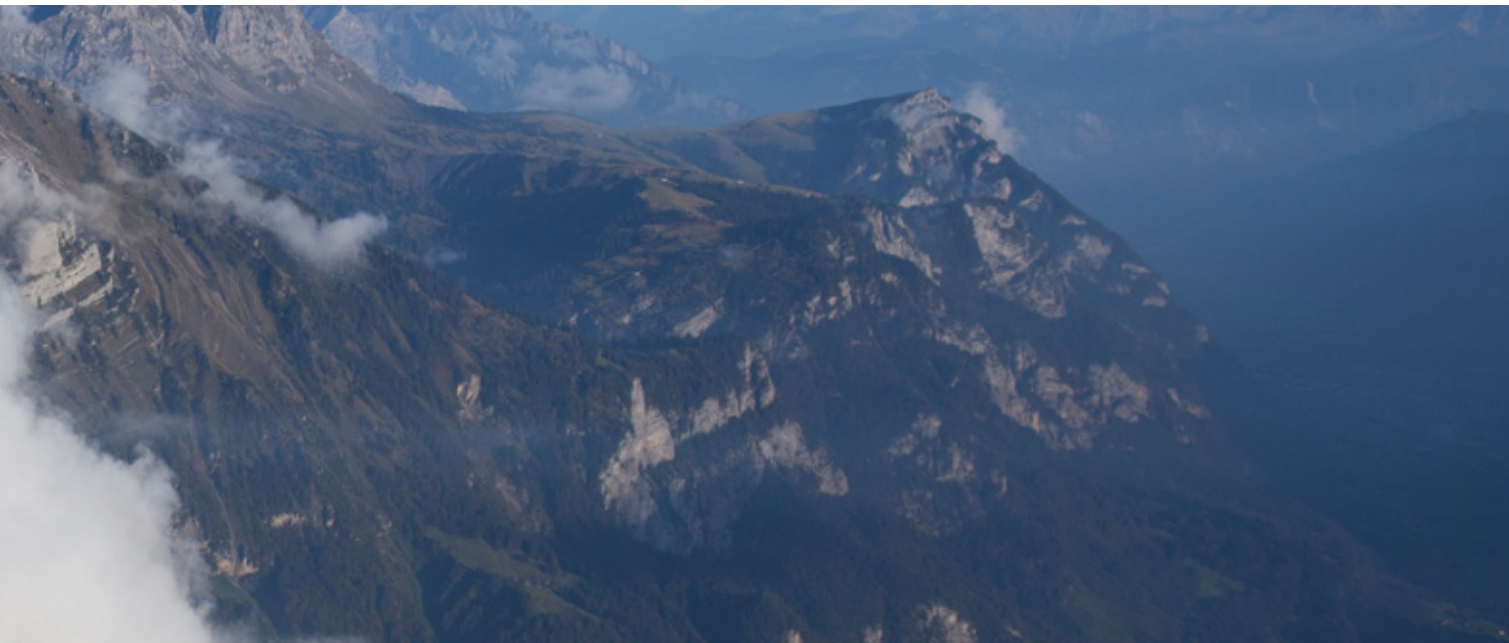
KIDS 21

COVER: KLAUS FENGLER
THIS SIDE: KLAUS KRANEBITTER



MARMOT MISSION

MARMOT CRAFTS PROFESSIONAL QUALITY OUTDOOR GEAR, BORN FROM WORKING MOUNTAIN GUIDES AND INSTRUCTORS. INSPIRED BY THE ALPINIST SPIRIT OF ADVENTURE TO SEARCH AND ACHIEVE IN A HARSH WORLD, OUR PRODUCTS ARE SIMPLE, APPROPRIATE, DEPENDABLE AND DAMN GOOD LOOKING. THEY WORK, AND WORK HARD. COUNT ON IT.





SHELL

The wisdom of over thirty years of mountain testing have helped us to develop our range of products and make advancements which transfer down to even our most affordable offerings. With the innovative new 3-layer MEMBRAIN FusionDri technology, Marmot has developed a fabric that is second to none when it comes to breathability, robustness and wear comfort.

SPEED LIGHT JACKET

SIZES S, M, L, XL, XXL

WEIGHT 348.7 g

MATERIALS GORE-TEX® Pro Products 3L

100% Nylon Ripstop 3.1 oz/yd

CENTER BACK LENGTH 73.66 cm

FIT Athletic Fit



COLOURS



Technical, lightweight, robust and with a lean and clean style – the Speed Light Jacket is a minimalist jacket designed to appeal to the no-compromise, performance-seeking alpine enthusiast who likes to keep weight to a minimum. Made from Gore-Tex® Pro fabric, it is >>

WOMEN'S SPEED LIGHT JACKET

SIZES XS, S, M, L, XL

WEIGHT 309 g

MATERIALS GORE-TEX® Pro Products 3L

100% Nylon Ripstop 3.1 oz/yd

CENTER BACK LENGTH 68.6 cm

FIT Athletic Fit



COLOURS



waterproof, windproof and breathable. The storm hood with laminated brim, the cuffs and the hem are all easily adjustable.

MOISTURE VAPOR ESCAPES

RAIN AND WIND STAY OUT



OUTER MATERIAL

GORE-TEX® MEMBRANE

LINING

3-LAYER GORE-TEX® PRO

3-layer GORE-TEX® Pro product for a rough day outside. GORE-TEX® Pro product is the optimum solution to use under extreme tough conditions. The 3-layer construction comprises a special high performance GORE-TEX® membrane, bonded to a tough outer material and a specially developed robust inner lining. The benefit: no movement between the three layers, which means less wear and tear, and even greater durability.



KLAUS KRANEBITTER

NANO JACKET

SIZES S, M, L, XL

WEIGHT 232.5 g

MATERIALS GORE-TEX® Products with PacLite® Technology 100% Nylon Ripstop 2.2 oz/yd

CENTER BACK LENGTH 71.12 cm

FIT Athletic Fit

COLOURS



Marmot's UltraLight offering in GORE-TEX® with PacLite® technology is an evolved solution for long treks in spotty weather. 100% seam taped with an elastic draw cord hem and water >>

WOMEN'S NANO JACKET

SIZES XS, S, M, L, XL

WEIGHT 218.3 g

MATERIALS GORE-TEX® Products with PacLite® Technology 100% Nylon Ripstop 2.2 oz/yd

CENTER BACK LENGTH 67.3 cm

FIT Athletic Fit

COLOURS



resistant zippers throughout, the Nano is guaranteed to keep you dry without weighing you down. Pack pockets feature laser-drilled pocket backing that enhances breathability.

MINIMALIST JACKET

SIZES S, M, L, XL, XXL

WEIGHT 425.2 g

MATERIALS GORE-TEX® Products with PacLite® Technology 100% Polyester 3.6 oz/yd

CENTER BACK LENGTH 71.12 cm

FIT Regular Fit

COLOURS



Rainwear for the dedicated outdoors person, the Minimalist is a lightweight shell, while >>

WOMEN'S MINIMALIST JACKET

SIZES XS, S, M, L, XL

WEIGHT 408.2 g

MATERIALS GORE-TEX® Products with PacLite® Technology 100% Polyester 3.6 oz/yd

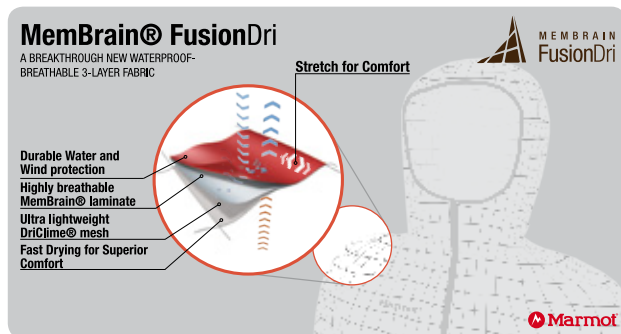
CENTER BACK LENGTH 69.2 cm

FIT Regular Fit

COLOURS



Gore's inimitable PacLite® technology gives it guaranteed reliability.



A breakthrough new waterproof-breathable fabric that provides the ultimate in protection, breathability and comfort. This innovative new 3-layer technology combines durable water and wind protection with a highly breathable laminate to an ultra lightweight wicking backer for extreme comfort in high aerobic and everyday activities.

SPEEDRI JACKET

SIZES S, M, L, XL, XXL

WEIGHT 394.1 g

MATERIALS MemBrain FusionDri

100% Nylon Ripstop Stretch 3L 2.8 oz/yd

CENTER BACK LENGTH 73 cm

FIT Athletic Fit



COLOURS



The Speedri Jacket represents the synthesis of technical functionality and maximized wear comfort. The innovative new 3-layer MEMBRAN FusionDri Technology fabric is fully waterproof and with its 15 denier Ultra Lightweight Wicking Backer it sets new standards >>

INTERFUSE JACKET

SIZES S, M, L, XL, XXL

WEIGHT 470.6 g

MATERIALS MemBrain FusionDri 100% Nylon

Plain Weave Stretch 3L 4.0 oz/yd

CENTER BACK LENGTH 76.2 cm

FIT Athletic Fit



COLOURS



With the innovative new 3-layer MEMBRAN FusionDri technology, the Interfuse Jacket is one of the highlight products in our range of technical active shells. The hard wearing 70 denier face fabric is waterproof, while the 15 denier Ultra Lightweight Wicking Backer sets new benchmark standards in terms of weather protection, breathability and wear comfort. The Interfuse Jacket delivers optimized protection and maximum wear comfort for all types of aerobic activity.

WOMEN'S SPEEDRI JACKET

SIZES XS, S, M, L, XL

WEIGHT 354.4 g

MATERIALS MemBrain FusionDri

100% Nylon Ripstop Stretch 3L 2.8 oz/yd

CENTER BACK LENGTH 68.6 cm

FIT Athletic Fit



COLOURS



in terms of breathability and comfort. For enhanced abrasion resistance, 70 denier fabric is used on the shoulders, while the 15 denier fabric on the rest of the jacket has active stretch properties for an athletic fit. With an adjustable hood and integrated air vents.

MARMOT MEMBRAIN® STRATA™ SHELL



STRETCH MAN JACKET

SIZES S, M, L, XL, XXL

WEIGHT 368.5 g

MATERIALS MemBrain® strata™ 100% Nylon

Stretch 3.0 oz/yd » MemBrain® strata™

100% Nylon Stretch 3.8 oz/yd

CENTER BACK LENGTH 73.7 cm

FIT Athletic Fit



COLOURS



This waterproof marvel wins by a mile in the elasticity category and keeps you bone dry and comfortable in the wettest conditions. Great for high-output activities, thanks to core >>

ESSENCE JACKET

SIZES S, M, L, XL, XXL

WEIGHT 170.1 g

MATERIALS MemBrain® strata™

100% Nylon Ripstop 1.6 oz/yd

CENTER BACK LENGTH 71.1 cm

FIT Athletic Fit



COLOURS



The Essence Jacket is the pinnacle of Marmot's cutting edge lightweight waterproof and breathable jackets. The combination of a super lightweight 12 denier face fabric exclusive to Marmot, teamed up with our own MEMBRAIN® strata lamination technology, has created the lightest waterproof breathable fabric available and allows this jacket to be the lightest, most breathable garment in its category.

WOMEN'S ATHENA JACKET

SIZES XS, S, M, L, XL

WEIGHT 371.4 g

MATERIALS MemBrain® strata™ 100% Nylon

Stretch 3.0 oz/yd » MemBrain® strata™ 100%

Nylon Stretch 3.8 oz/yd

CENTER BACK LENGTH 66 cm

FIT Athletic Fit



COLOURS



zonal venting and our patented Angel Wing Movement™—the Stretch Man and its female counterpart, the Athena Jacket, are a highly evolved tool for athletic pursuits in shifty weather.



KLAUS KRANEBITTER



KLAUS KRANEBITTER



ORACLE JACKET

SIZES S, M, L, XL, XXL

WEIGHT 459.3 g

MATERIALS MEMBRAIN® strata™ 100%

Nylon Ripstop 3.0 oz/yd » MEMBRAIN®

strata™ 100% Nylon Stretch 3.8 oz/yd

CENTER BACK LENGTH 74.9 cm

FIT Regular Fit



COLOURS



The Oracle is a value-oriented, high-performance shell now made in MEMBRAIN® strata™. >>

WOMEN'S ORACLE JACKET

SIZES XS, S, M, L, XL

WEIGHT 405.4 g

MATERIALS MEMBRAIN® strata™

100% Nylon Ripstop 3.0 oz/yd » MEMBRAIN® strata™

100% Nylon Stretch 3.8 oz/yd

CENTER BACK LENGTH 69.9 cm

FIT Regular Fit



COLOURS



Fully featured, it's ideal for hiking, alpine climbing, and backpacking.

MARMOT PRECIP® SHELL

Marmot's proprietary PU coating technology, specially engineered for unlined garments, combines hydrophobic and hydrophilic PU with a special DryTouch Technology in a very precisely controlled 2.5 layer coating system. DryTouch incorporates a protein in the coating reducing condensation and the sticky clammy feel of most coatings.

Waterproofness > 15,000 mm

Breathability > 12,000 g/qm



PRECIP PANT

SIZES S, M, L, XL, XXL

WEIGHT 255.1 g

MATERIALS PreCip® 2.5 100%

Nylon Ripstop 2.7 oz/yd

FIT Regular Fit

With its waterproof and breathable coating, the Precip Pant now provides even more reliable weather protection. With zip-secure side pockets and back pocket and ankle zips for convenience.



WOMEN'S PRECIP PANT

SIZES XS, S, M, L, XL

WEIGHT 229.6 g

MATERIALS PreCip® 2.5

100% Nylon Ripstop 2.7 oz/yd

COLOURS WOMEN



PRECIP JACKET

SIZES S, M, L, XL, XXL

WEIGHT 371.4 g

MATERIALS PreCip® 2.5

100% Nylon Ripstop 2.7 oz/yd

CENTER BACK LENGTH 73.7 cm

FIT Regular Fit

COLOURS



With its waterproof and breathable coating, the Precip Jacket is an ideal allround functional jacket. Integrated ceramic particles reduce contact to the skin and increase the wear comfort. >>

WOMEN'S PRECIP JACKET

SIZES XS, S, M, L, XL, XXL

WEIGHT 323.2 g

MATERIALS PreCip® 2.5

100% Nylon Ripstop 2.7 oz/yd

CENTER BACK LENGTH 68.6 cm

FIT Regular Fit

COLOURS



Available in 15 (men) and 16 (women) colours.

PRECIP FULL ZIP PANT

SIZES S, M, L, XL, XXL

WEIGHT 377 g

MATERIALS PreCip® 2.5

100% Nylon Ripstop 2.8 oz/yd

FIT Regular Fit



WOMEN'S PRECIP FULL ZIP PANT

SIZES XS, S, M, L, XL

WEIGHT 362.9 g

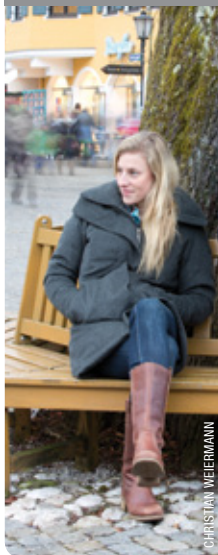
MATERIALS PreCip® 2.5

100% Nylon Ripstop 2.7 oz/yd



The Precip Full Zip Pant is a reliable protection against bad weather. The full side zippers allow for quick handling in case of sudden rain.

URBAN TECH



WOMEN'S HIGHLAND JACKET

SIZES XS, S, M, L, XL

WEIGHT 331.7 g

MATERIALS MEMBRAIN® strata™

100% Nylon Ripstop Stretch 2.8 oz/yd

CENTER BACK LENGTH 86.4 cm

FIT Regular Fit

COLOURS



A clean design, extra length and exclusive MEMBRAIN® strata™ rain protection make the Highland ideal for hiking in the rain as well as handling wet weather closer to home.

WEST BROOK JACKET

SIZES S, M, L, XL, XXL

WEIGHT 805.1 g

MATERIALS MemBrain® 10 2L 65%

Polyester 35% Cotton 4.2 oz/yd

CENTER BACK LENGTH 78.7 cm

FIT Regular Fit

COLOURS



Hit the streets in high-tech style with the West Brook Jacket. This urban explorer features a two-layer construction that provides waterproofing, plenty of breathability, and a uniquely soft, cottony feel. Stylistic detailing makes this jacket perfect for day or night, and removable hood helps keep your options open.



SOFTSHELL

Our softshell collection is conceived and designed to accommodate a wide range of weather conditions and uses.

ROM JACKET

SIZES S, M, L, XL, XXL

WEIGHT 510.3 g

MATERIALS WINDSTOPPER® Softshell

100% Polyester Stretch 5.4 oz/yd

» Softshell Double Weave 90% Polyester

10% Elastane Stretch 7.3 oz/yd

CENTER BACK LENGTH 73 cm

FIT Athletic Fit

COLOURS



m2

softshell



WOMEN'S ROM JACKET

SIZES XS, S, M, L, XL

WEIGHT 411.1 g

MATERIALS WINDSTOPPER® Softshell

100% Polyester Stretch 5.4 oz/yd

» Softshell Double Weave 90% Polyester

10% Elastane Stretch 7.3 oz/yd

CENTER BACK LENGTH 69.2 cm

FIT Regular Fit

COLOURS



m2

softshell



This zonally constructed jacket uses air permeable Marmot M2 softshell and GORE® WINDSTOPPER® fabrics to create an incredibly comfortable, breathable garment that's also windproof and highly water-resistant. Marmot's big mountain heritage shows in every detail of this Swiss army knife of softshells.

NABU JACKET

SIZES S, M, L, XL

WEIGHT 601 g

MATERIALS Polartec® NeoShell®

88% Nylon 12% Elastane 6.5 oz/yd

CENTER BACK LENGTH 76.2 cm

FIT Athletic Fit



m1
softshell

POLARTEC®
NeoShell®

COLOURS



The Nabu Jacket utilizes Polartec®'s innovative NeoShell® Technology. The fabric is waterproof, wind resistant and exceptionally breathable, and the seams of the jacket are fully taped. With its exclusive Polartec® Power Dry® High Efficiency Backer, the Nabu shifts >>

HIGHLAND PANT

SIZES 28, 30, 32, 34, 36, 38, 40

WEIGHT 499.8 g

MATERIALS Softshell Double Weave 95% Nylon

5% Elastane 5.6 oz/yd » Softshell Double Weave 50%

Nylon 43% Polyester 7% Elastane 8.1 oz/yd

FIT Relaxed Fit



driclime®
MESH

COLOURS



The Highland Pant is a functional softshell pant with a hard-wearing and highly water repellent face fabric that makes it ideal for any type of back country activity. The fabric also >>

WOMEN'S NABU JACKET

SIZES XS, S, M, L, XL

WEIGHT 538.6 g

MATERIALS Polartec® NeoShell®

88% Nylon 12% Elastane 6.5 oz/yd

CENTER BACK LENGTH 66 cm

FIT Athletic Fit



m1
softshell

POLARTEC®
NeoShell®

COLOURS



moisture rapidly to create an optimized internal wear climate. It combines the weather protection credentials of a hard shell with the outstanding moisture regulating performance of a soft shell.

WOMEN'S HIGHLAND PANT

SIZES 2, 4, 6, 8, 10, 12, 14

WEIGHT 439.4 g

MATERIALS Softshell Double Weave 95% Nylon

5% Elastane 5.6 oz/yd » Softshell Double Weave

50% Nylon 43% Polyester 7% Elastane 8.1 oz/yd

FIT Regular Fit



driclime®
MESH

COLOURS



benefits from integral UV protection (UPF 50) and stretch properties for superior wear comfort. With articulation for ease of movement and reinforcements for additional scuff protection.





FLEECE

Marmot's series of Fleece garments are an integral layering system designed specifically to work with the shell and softshell exterior layering garments.



POLARTEC® POWER DRY® HIGH EFFICIENCY™

POLARTEC® Power Dry® High Efficiency™ fabrics are designed to keep your skin dry when you sweat. All fabrics in this series feature a bi-component knit construction that uses different yarns on either side of the fabric. This creates two different surfaces: one that is optimized to move moisture away from the skin, the other to dry quickly.

ALPINIST ½ ZIP

SIZES S, M, L, XL

WEIGHT 439.4 g

MATERIALS 100% Polyester Grid

Fleece 5.9 oz/yd

CENTER BACK LENGTH 69.2 cm

FIT Regular Fit

COLOURS



The Alpinist ½ Zip effectively regulates the internal wear climate for all winter activities – from hiking and alpine climbing to mountaineering, since the 100wt polyester fleece wicks moisture away rapidly and efficiently. The Lycra cuffs, integrated thumb loops and zip baffle all add to the wear comfort.

THERMO HOODY

SIZES S, M, L, XL

WEIGHT 453.6 g

MATERIALS Polartec® Power Dry®

92% Polyester 8% Elastane Stretch 3.9 oz/yd

CENTER BACK LENGTH 70.5 cm

FIT Athletic Fit

COLOURS



WOMEN'S THERMO HOODY

SIZES XS, S, M, L, XL

WEIGHT 396.9 g

MATERIALS Polartec® Power Dry®

92% Polyester 8% Elastane Stretch 3.9 oz/yd

CENTER BACK LENGTH 63.5 cm

FIT Athletic Fit

COLOURS



THERMO ½ ZIP

SIZES S, M, L, XL

WEIGHT 340.2 g

MATERIALS Polartec® Power Dry®

92% Polyester 8% Elastane Stretch 3.9 oz/yd

CENTER BACK LENGTH 70.5 cm

FIT Athletic Fit

COLOURS



WOMEN'S THERMO ½ ZIP

SIZES XS, S, M, L, XL

WEIGHT 283.5 g

MATERIALS Polartec® Power Dry®

92% Polyester 8% Elastane Stretch 3.9 oz/yd

CENTER BACK LENGTH 63.5 cm

FIT Athletic Fit

COLOURS



For maximum warmth and minimal weight, look no further than the Thermo Hoody and Thermo ½ Zip – great for mountaineering, trekking, mountain biking or climbing. The >>

high-performance POLARTEC® Power Dry® High Efficiency provides constant thermal regulation and prevents any heat blockages. With an athletic cut and flat-stitched seams for a pro-standard fit.



MOMENTUM

For those that like it fast & light Marmot has expanded its Momentum category with several high-performance pieces for Spring 2013.

NANOWICK JACKET

SIZES S, M, L, XL, XXL

WEIGHT 130.4 g

MATERIALS 100% Nylon Mini Rip 0.9 oz/yd
» 78% Polyester 22% Nylon DriClima® Mesh

CENTER BACK LENGTH 71.1 cm

FIT Athletic Fit

COLOURS



WOMEN'S NANOWICK JACKET

SIZES XS, S, M, L, XL

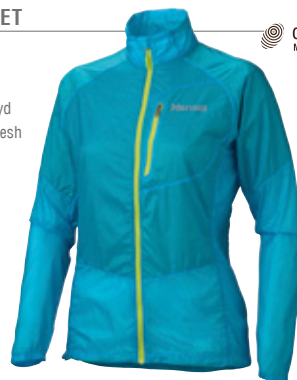
WEIGHT 130.4 g

MATERIALS 100% Nylon Mini Rip 0.9 oz/yd
» 78% Polyester 22% Nylon DriClima® Mesh

CENTER BACK LENGTH 66 cm

FIT Athletic Fit

COLOURS



The new Nanowick Jacket is an ultra-lightweight technical jacket that tips the scales at just 130 g and is the ideal outer layer for all fast & light outdoor activities. The high performance DriMesh™ fabric delivers rapid moisture transmission at the key areas and thus extremely good wear comfort. The collar features a drawcord for individual size adjustment.

ETHER DRICLIME

SIZES S, M, L, XL, XXL

WEIGHT 249.5 g

MATERIALS 100% Nylon DWR 1.1 oz/yd

CENTER BACK LENGTH 72.4 cm

FIT Athletic Fit



COLOURS



The Ether DriClime Jacket has been designed for people with a true passion for the outdoors. It differs from other formats of the DriClime jackets due to the hood construction and >>

WOMEN'S ETHER DRICLIME

SIZES XS, S, M, L, XL

WEIGHT 214.6 g

MATERIALS 100% Nylon DWR 1.1 oz/yd

CENTER BACK LENGTH 65.4 cm

FIT Athletic Fit



COLOURS



the use of a new face fabric which has been used to offer a fresh new look and feel without compromising the need for wind resistance, breathability and a water repellent finish.

WINDRIDGE SHORT SLEEVE

SIZES S, M, L, XL, XXL

WEIGHT 226.8 g

MATERIALS 100% Polyester Mesh 3.0 oz/yd

» 100% Polyester Jersey 4.0 oz/yd

CENTER BACK LENGTH 72.4 cm

FIT Semi-Fitted



COLOURS



For blasts up steep trails in variable conditions, you can't do better than the quick-drying, moisture-wicking Windridge Short Sleeve, featuring flat-locked seams and breathable mesh panels for a level of comfort unmatched by anything besides your birthday suit.

WOMEN'S CRISSY SHORT SLEEVE

SIZES XS, S, M, L, XL

WEIGHT 178.6 g

MATERIALS 93% Polyester 7% Elastane

Jersey 4.3 oz/yd

FIT Semi-Fitted



COLOURS



Made from a super comfortable lightweight performance fabric with flat-locked seams that never irritate, the Crissy Short Sleeve is more than ready for anything you (or your competition) can dish out.



SPORTSWEAR

Marmot's Sportswear range combines functionality and technical features with cool looks and a fun vibe – all with comfort guaranteed!

DEXTER PLAID SHORT SLEEVE

SIZES S, M, L, XL, XXL

WEIGHT 138.9 g

MATERIALS 100% Nylon Supplex 2.5 oz/yd

FIT Semi-Fitted

UPF
35



COLOURS



The Dexter is a versatile short-sleeved shirt that looks cool and has convincing functional features. The lightweight, breathable nylon fabric with integrated factor 35 UV protection is soft on the skin, making the Dexter the ideal choice for hiking, via ferratas or city wear.

ELDRIDGE SHORT SLEEVE

SIZES S, M, L, XL, XXL

WEIGHT 221.1 g

MATERIALS 77% Polynosic Rayon

8% Recycled Polyester

15% Polyester 4.2 oz/yd

FIT Regular Fit

↑
MARMOT
upcycle

UPF
20



COLOURS



Like an old friend, you can count on this. The sanded mid-weight fabric of this short sleeve button-up is truly comfortable and good for long days outside, thanks to generous UV protection.

WOMEN'S SARA SHORT SLEEVE

SIZES S, M, L, XL

WEIGHT 175.8 g

MATERIALS drirelease® TENCEL® 84% Polyester
12% TENCEL® Lyocell 4% Elastane 5.1 oz/yd
FIT Regular Fit

drirelease
FRESHGUARD

COLOURS



Ramble down the trail to the Grand Teton's Jenny Lake or continue on to Hidden Falls in the Sara. Drirelease® Tencel renewable fiber gives the certain comfort of cotton with the performance of synthetic. With permanent wicking and drying abilities, FreshGuard® finish odor control gives this shirt trail smart. Contrast stitch detailing, ruching at front and back yoke and novelty taping add pretty style.

WOMEN'S REESE PLAID

SIZES 28, 30, 32, 34, 36, 38, 40

WEIGHT 104.9 g

MATERIALS 58% Nylon 42% Polyester
Plainweave 2.5 oz/yd
FIT Regular Fit

UPF
50

COLOURS



Summertime vibes are guaranteed with this funky style, functional short-sleeved shirt. Its stretch fabric with integrated factor 50 UV protection is soft on the skin, fast-drying and wicks moisture to the outside fast. And the nylon content makes it particularly hard-wearing. It even looks great after a long hike or a tough via ferrata.

WOMEN'S LOBO'S PANT

SIZES 2, 4, 6, 8, 10, 12, 14

WEIGHT 241 g

MATERIALS 93% Nylon 7% Elastane
Plain Weave DWR 3.8 oz/yd
FIT Regular Fit

UPF
30

drilime®

COLOURS



Integrated factor 30 UV protection and comfy, fast drying fabric make the Women's Lobo's Pant ideal for the outdoors as well as for convivial barbecue with friends.

WOMEN'S MIA BURNOUT HOODY

SIZES XS, S, M, L, XL

WEIGHT 136.1 g

MATERIALS 65% Polyester 35%
Cotton 4.0 oz/yd
FIT Regular Fit

COLOURS



The Mia Burnout Hoody tempers cool ocean breezes at night. Flat-locked seams add comfort to this lightweight hoody; garment washed for extra soft hand. 3-piece hood and all over burnout print give this hoody stylish appeal. Tag-free neckline equals no annoying distractions.

WOMEN'S MEADOW TEE

SIZES XS, S, M, L, XL

WEIGHT 85 g

MATERIALS 100% Organic Cotton

FIT Semi-Fitted



COLOURS



Nature is an open playground; get out and have fun in the Meadow Tee. Front graphics add youthful touch to this soft 100% organic cotton jersey knit crew neck tee. No tags for comfort.

WOMEN'S LEXI PANT

SIZES 2, 4, 6, 8, 10, 12, 14

WEIGHT 292 g

MATERIALS 67% Cotton 33% Nylon

Canvas 3.4 oz/yd

CENTER BACK LENGTH 72.4 cm

FIT Regular Fit

UPF
30



COLOURS



The laid-back design and flattering fit of the Lexi make it a stylish choice for climbing or bouldering. The soft fabric with integrated factor 30 UV protection is ultra-smooth on the skin thanks to its cotton content and the waist band is wide for extra comfort.

WOMEN'S VOGUE TANK

SIZES XS, S, M, L, XL

WEIGHT 199.9 g

MATERIALS 92% Nylon Supplex 8%

Elastane 7.7 oz/yd

FIT Athletic Fit

UPF
50



COLOURS



With soft and stretchy Supplex nylon and a design that's as eye-catching as it is functional, the Vogue Tank is a favorite for everything from yoga to climbing to jogging.

WOMEN'S ERIN TANK

SIZES XS, S, M, L, XL

WEIGHT 280.7 g

MATERIALS 92% Nylon Supplex

8% Elastane 7.7 oz/yd

FIT Regular Fit

UPF
50



COLOURS



Get moving in the stretchy Erin Tank. The performance fabric pulls sweat away from your skin and keeps you fresh and dry. A supportive 3-piece shelf bra with breathable mesh paneling makes this tank perfect for a quick pitch at the local crag. Faux layer and cross back design add a feminine touch.



JOCHEN MEYER



KLAUS FENGLER

CALIFORNIA TEE

SIZES S, M, L, XL, XXL

WEIGHT 170.1 g

MATERIALS 100% Organic Cotton

FIT Regular Fit



COLOURS



Welcome to the Marmot Sunshine State! This casual T-shirt exudes sunshine and is made from 100% certified organic cotton that feels good against the skin.

HUECO PANT

SIZES XS, S, M, L, XL, XXL

WEIGHT 377 g

MATERIALS 67% Cotton 33% Nylon

Canvas 3.4 oz/yd

FIT Relaxed Fit



COLOURS



Marmot's hugely popular climbing pant has had a complete facelift! The new cut gives it an even better fit and the soft, cotton-rich fabric feels nice and smooth on the skin. The freedom of movement is amazing, making the Hueco a top choice for climbing and bouldering, however hard the moves get!





PETER MÜSCH



KIDS

Kids want functionality that is fun! So Marmot has 26 new kids' styles for Spring 2013 that work exceptionally well in the outdoors and come in designs that kids love.

BOY'S PRECIP JACKET

SIZES XS, S, M, L, XL

WEIGHT 275 g

MATERIALS PreCip® 2.5

100% Nylon Ripstop 2.7 oz/yd

CENTER BACK LENGTH 57.8 cm

FIT Regular Fit



COLOURS



The Precip Jacket is reliable, value-oriented, full-function rainwear for all adventures. >>

KID'S PRECIP PANT

SIZES XS, S, M, L, XL

WEIGHT 158.8 g

MATERIALS PreCip® 2.5 100% Nylon

Ripstop 2.7 oz/yd

FIT Regular Fit



COLOURS



The Kid's Precip Pant is reliable, value-oriented, full-function rainwear for all adventures.

GIRL'S PRECIP JACKET

SIZES XS, S, M, L, XL

WEIGHT 275 g

MATERIALS PreCip® 2.5

100% Nylon Ripstop 2.7 oz/yd

CENTER BACK LENGTH 57.8 cm

FIT Regular Fit



COLOURS



The Precip Jacket is reliable, value-oriented, full-function rainwear for all adventures.

FOR FURTHER INFORMATION AND
STOCKLIST PLEASE CONTACT

www.marmot.eu



LAYOUT

David Schultheiß
Freiburg, Germany
www.davidschultheiss.de

PRINT

PMS Offsetdruck GmbH
Wendestein, Germany
www.pms-offsetdruck.de

Marmot[®]
FOR LIFE

Marmot Mountain Europe GmbH

Gottfried–Stammler–Str. 12
D–91220 Schnaittach
GERMANY

E–mail: info@marmot.de
facebook.com/marmot.mountain.europe

www.marmot.eu



KLAS KRAEUTER